

AUTO EXPRESS 115



PRINCIPAL DIMENSIONS

Length overall	115.0 metres
Length (waterline)	111.0 metres
Beam (moulded)	30.5 metres
Hull depth (moulded)	8 metres
Hull draft (maximum)	3.3 metres

PAYLOAD AND CAPACITIES

Passengers	1,610
Crew	22 (Subject to Flag)
Vehicles	451 cars
Heavy vehicles	21 trucks
Clear height	4.5 meters
Maximum deadweight	1,000 tonnes

PROPULSION

Main engines	4 x Wartsila 16V31
Gearboxes	4 x Reintjes SVA L950
Waterjets	4 x Wartsila WXJ 1500 SRI

PERFORMANCE

Speed	36.1 knots (800 t DWT, 90% MCR)
Fuel	2 x 65,100 litres

CLASSIFICATION

DNV-GL Notation
✱1A HSLC R1 Ferry B EO
Danish Flag



YARD NO: 423

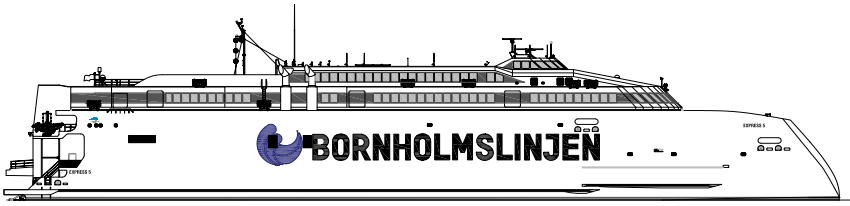
DESTINATION: RONNE

DELIVERED: 2023

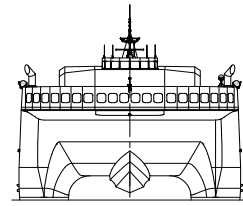
CLIENT: MOLSLINJEN

AUTO EXPRESS 115

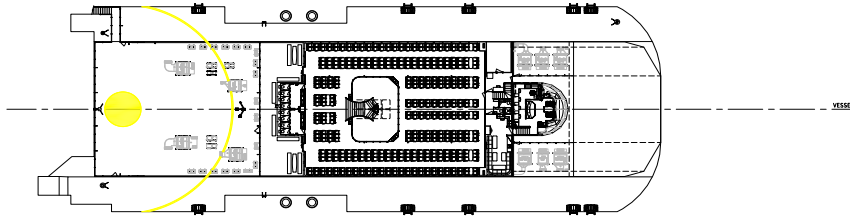
Vessel type: 115m Vehicle-Passenger Catamaran



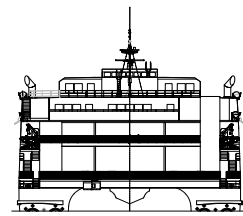
PROFILE



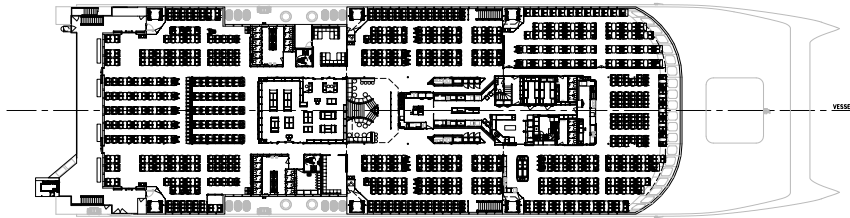
FORWARD ELEVATION



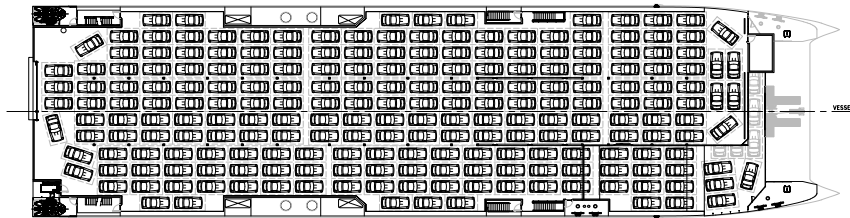
BRIDGE DECK



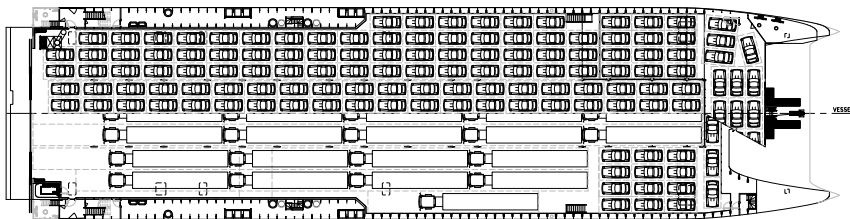
AFT ELEVATION



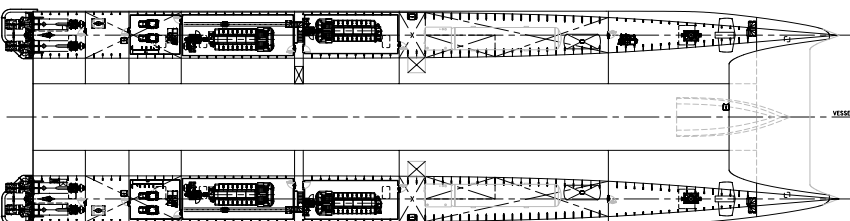
PASSENGER DECK



UPPER VEHICLE DECK



VEHICLE DECK



HULLS



100 Clarence Beach Road Henderson | Tel +61 8 9410 1111
sales@austal.com
www.austal.com

YARD NO: 423

DESTINATION: RONNE

DELIVERED: 2023

CLIENT: MØLSLINJEN