

AUTO EXPRESS 102



CONDOR LIBERATION

YARD NO : 270

DESTINATION : UNITED KINGDOM

DELIVERY : 2014

CLIENT : CONDOR FERRIES

PRINCIPAL DIMENSIONS

Length overall	102.0 metres
Length (waterline)	101.4 metres
Beam (moulded)	27.4 metres
Hull depth (moulded)	7.6 metres
Hull draft (maximum)	4.5 metres

PAYLOAD AND CAPACITIES

Passengers	880 in 3 lounges
Vehicles	245 cars
Heavy vehicles	188 lane metres for trucks and 137 cars
Clear heights	
Trucks under raised mezzanine deck	4.30 metres
Cars under mezzanine deck	2.25 metres
Cars over mezzanine deck	1.85 metres
Maximum deadweight	620 tonnes

PROPULSION

Main engines	3 x MTU 20V 8000 M71L 9,100 kW @ 1,150 rpm
Gearboxes	3 x ZF 53800
Waterjets	3 x Wartsila LJX 1300

PERFORMANCE (with Ride Control fitted)

Speed	37 knots (90% MCR, 390 tonnes DWT); 34 knots service speed
Range	660 nm @ 90% MCR + 20% reserve or 940 nm

CLASSIFICATION

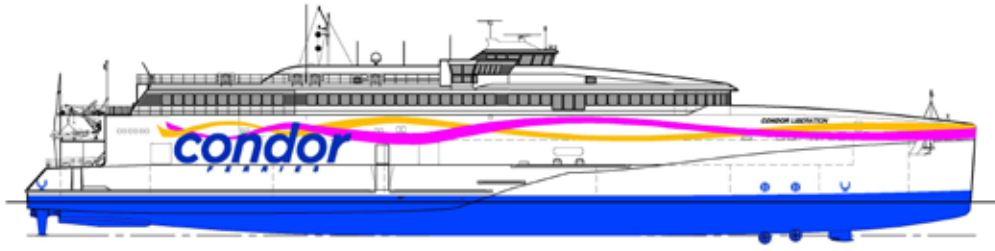
Germanischer Lloyd
 ✕ 100 A5, HSC - B OC3 High Speed Passenger / Ro-Ro Type, MC, AUT
 Bahamian Flag Authority



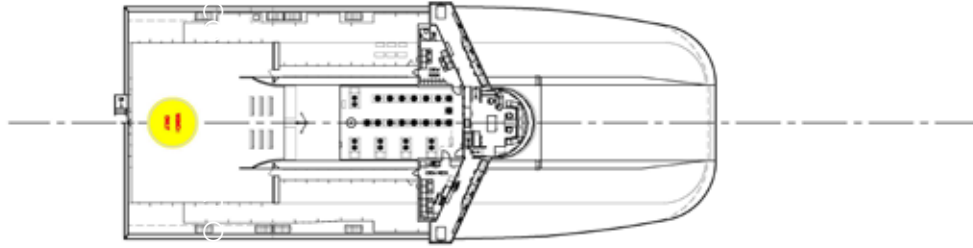
AUTO EXPRESS 102

Vessel type: 102m Vehicle-Passenger Trimaran

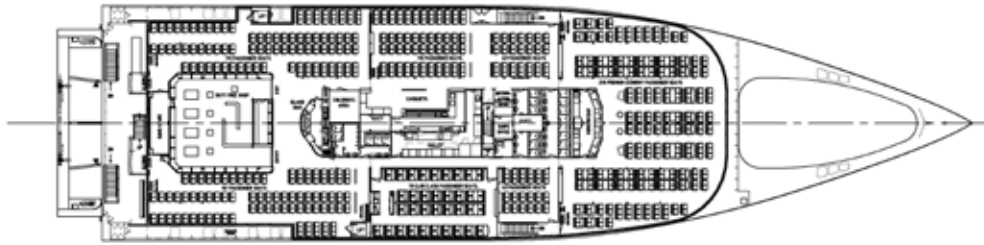
PROFILE



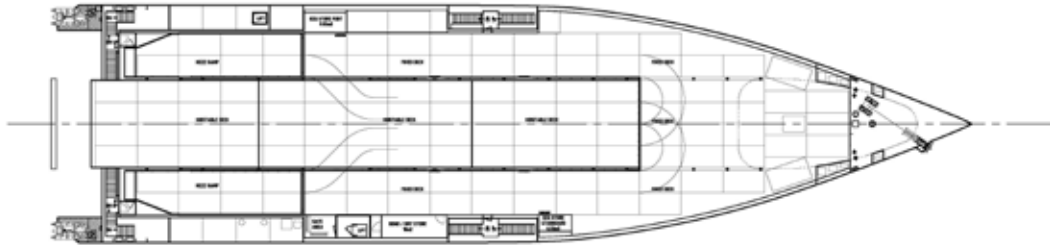
VIEWING DECK



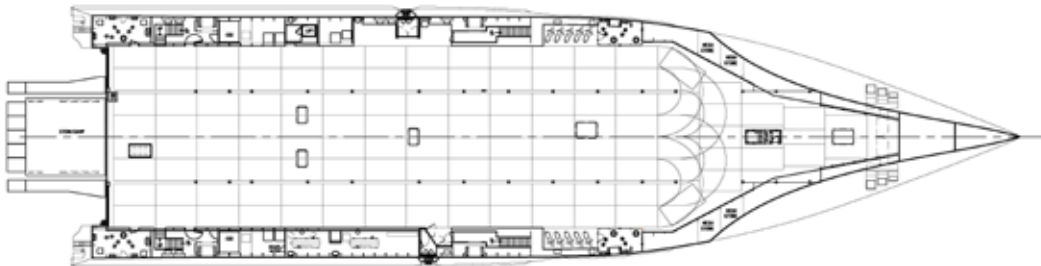
PASSENGER DECK



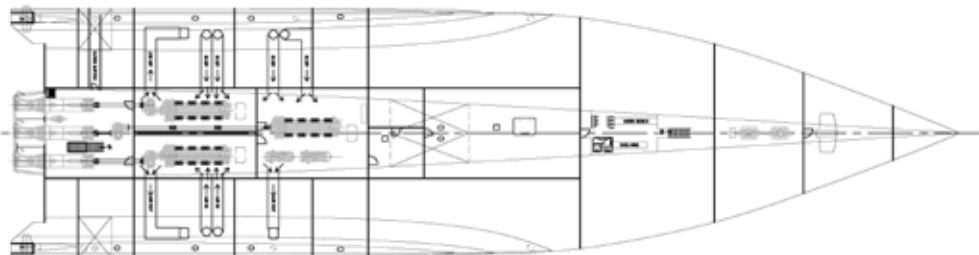
UPPER VEHICLE DECK



VEHICLE DECK



HULLS



CONDOR LIBERATION

YARD NO: 270

DESTINATION: UNITED KINGDOM

DELIVERY: 2014

CLIENT: CONDOR FERRIES

100 Clarence Beach Road
Henderson
Western Australia 6166

Tel +61 8 9410 1111
Fax +61 8 9410 2564
sales@austal.com
www.austal.com

