



ABOUT AUSTAL



AUSTAL WIND EXPRESS SERIES



Austal is the world's leading designer and builder of customised, high performance aluminium vessels for both commercial and defence applications and has delivered more than 230 vessels to customers around the world. Austal is a global defence prime contractor, and is also an established provider of worldwide vessel maintenance and support services.

Austal's product range includes wind farm support vessels; passenger and vehicle-passenger ferries; offshore service vessels; and leisure and tourism vessels, as well as revolutionary defence and paramilitary platforms including combat ships; multi-role vessels; patrol boats; and theatre support vessels. Austal also designs, installs, integrates and maintains sophisticated communications, radar and command and control systems.

As well as being the largest aluminium shipbuilder in the world, a unique capability to deliver customised solutions means Austal has experience with vessels ranging from 16 metres to 127 metres in length, featuring monohull, catamaran or trimaran hull forms.

With manufacturing facilities, service centres and sales offices in strategic regional locations, Austal is well placed to provide a rapid response to the needs of its customers worldwide.



Australia Shipyard



USA Shipyard



Philippines Shipyard

INTRODUCING THE *AUSTAL WIND EXPRESS* SERIES: Combining fuel efficiency with advanced seakeeping characteristics, Austal's new series of *Wind Express* platforms are the premier transportation solution for the burgeoning offshore wind farm industry.

By utilising Austal's world-renowned advanced hull design and engineering capabilities, each vessel is specifically designed to provide offshore wind farm operators with a rugged, reliable and efficient multi-purpose work boat platform.

Characterised by their optimum personnel comfort and safety, each vessel in the *Wind Express* series can be further customised to suit specific sea conditions, routes, and payload requirements.

Austal's patented Ride Control System (RCS) - successfully proven in commercial operation for more than two decades - ensures a safer, more productive platform, even when conditions get rough.

Like all Austal vessels, the *Wind Express* series offers the peace-of-mind that comes from dealing with a highly experienced shipbuilder with an established network of vessel support and maintenance centres worldwide.

As the largest aluminium shipbuilder in the world, Austal also has the unrivalled production capacity to facilitate fast, cost-effective delivery of multi-vessel fleets.



WHY AUSTAL?

CUSTOMISED VESSELS

Large, experienced in-house design team

SHORT DELIVERY TIMES

Powerful and efficient productive capacity

INNOVATIVE DESIGNS

Dedicated research and development team

ON-GOING SUPPORT

Global warranty and service network

LOW RISK SUPPLIER

Financial strength and sound management

HIGH QUALITY

Technologically advanced and market proven vessels

CUSTOMER FOCUS

Customer satisfaction by meeting agreed requirements

CAPABILITY DELIVERY

Specified performance delivered on time



EFFICIENT PERFORMANCE

Austal's refined catamaran hull form requires less power and fuel to meet operational requirements, delivering greater range and lower operating costs.

SAFE AND STABLE

The advanced hull form dampens vessel motions in high sea states.

MAXIMUM PRODUCTIVITY

Reduced sea sickness, greater payload capacity and a wider operating envelope ensures maximum productivity.



WIND EXPRESS CATAMARAN RANGE: A rugged and versatile platform that delivers stability and fuel efficiency through its refined catamaran hull form. Austal's *Wind Express* catamarans are specifically designed for operation in rough sea conditions.

PRACTICAL ARRANGEMENT

The offshore environment is hazardous, making a sensible layout onboard critical. Comfortable crew accommodation, high quality interior fitout, walk around engine room, good visibility and fore and aft cargo stowing makes for an unbeatable platform.

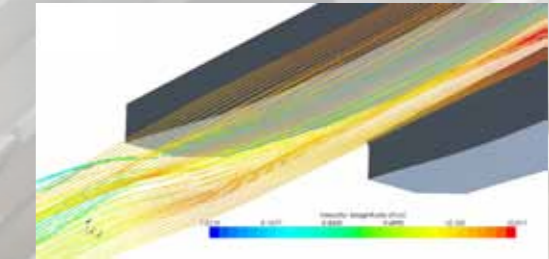


PROVEN CONSTRUCTION

By drawing on established and proven build standards in use across over 220 vessels, Austal possesses a comprehensive understanding of the behaviour of welded aluminium. Correctly designed aluminium structures will operate effectively for up to 30 years without any structural issues or the need for a single coat of paint.

PROVEN DESIGN

Austal's advanced Z-Bow hull form has already been successfully implemented on over 30 vessel deliveries. Considerable research has gone into the development of this hull form.



ROUGH WEATHER PERFORMANCE

When conditions get rough, Austal's *Wind Express* series outperforms its competitors. Austal's advanced Z-Bow hull form coupled with high tunnel clearance allows the vessel to maintain higher speeds in waves.

ADVANCED SEAKEEPING

Austal's TRI SWATH design combines the benefits of a SWATH hull form with Austal's proven trimaran technology to deliver an optimal ride in conditions up to Sea State 6.

STABILITY & PASSENGER COMFORT

Austal's TRI SWATH hull form delivers a reduction in accelerations (seasickness), providing safe and comfortable personnel transfer in high sea states.

PROVEN TECHNOLOGY

Austal's trimaran technology has been proven in both commercial and defence operations since 2005.

PUSH ONTO TURBINE WITH EASE

When sea conditions worsen, a vessel's ability to push onto the turbine is of most importance. Austal's TRI SWATH can stay pinned to the turbine in higher sea states than the competition, maximising productivity and minimising downtime.

COMPREHENSIVE TANK TESTING

Significant investment has gone into the development of TRI SWATH technology including extensive calm water resistance, free running and seakeeping model tests.



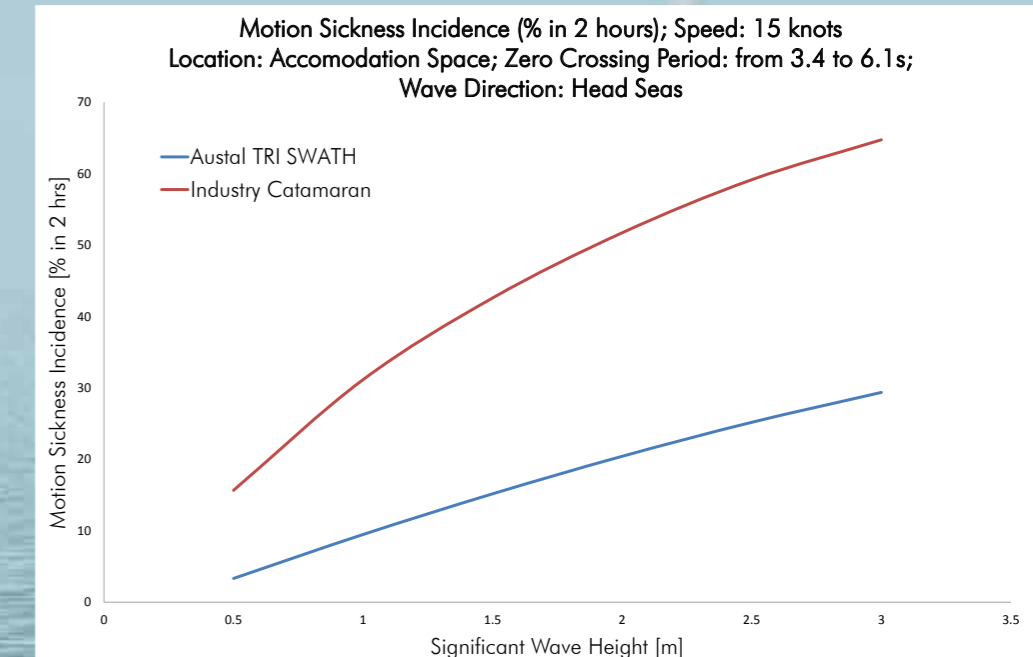
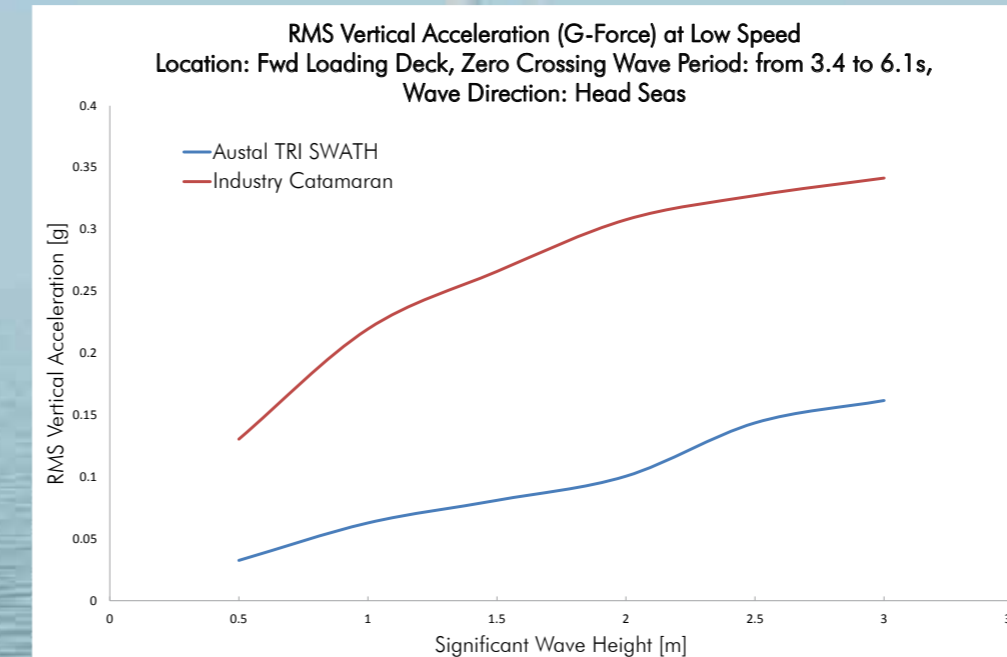
WIND EXPRESS TRI SWATH RANGE: Utilising a unique Austal-developed trimaran-SWATH hull form to deliver the highest possible levels of seakeeping, passenger comfort and fuel efficiency in rough sea conditions. This is achieved while maintaining a large working deck area and providing superior payload capacity.

SAFER TURBINE STEP OFF IN MORE CONDITIONS

The TRI SWATH range experiences lower vertical accelerations when operating at low speeds. The TRI SWATH therefore offers a safer working platform for turbine maintenance staff.

ENHANCED TECHNICIAN COMFORT THROUGH LOWER SEASICKNESS

The TRI SWATH range provides turbine maintenance staff a more comfortable transit to and from wind farms, when compared to the industry standard catamaran.





HEAD OFFICE
Email: sales@austal.com
Tel: +61 8 9410 1111

EUROPEAN OFFICE
Email: europe.sales@austal.com
Tel: +44 1252 477 940

WWW.AUSTAL.COM

SHIPS • SYSTEMS • SUPPORT

WIND EXPRESS TRI SWATH 54

Length Overall 54m
Beam 14.7m
Personnel Accommodation 60
Speed 24-26 knots
Range 3,500nm @ 12 knots



 WIND EXPRESS TRI SWATH 54